



# XP 2000 V<sup>®</sup>



General's new record-setting, race-winning ultra high performer with a V speed rating.





Sponsored by General Tire and riding on XP 2000Vs, Freddy Baker of Kirtland, Ohio has set numerous qualifying and lap records in SCCA racing and has been a winner across the nation. The XP 2000Vs are mounted on Baker's Porsche 944 Turbo. Tires, machine and driver are truly a winning combination.



Steve Saleen has turned from pure high performance driving to designing and building the stunning Saleen Mustang, a customized product that has gained instant stardom with experts and public alike. For the Saleen Mustang, Steve chose the XP 2000V.



Gene Michaux and his colleagues on the Razzberry Racing team use the new XP 2000Vs on the SSGT class Trans Am they race in the SCCA competition. Gene selected the XP 2000V for its quick, sure handling, outstanding traction, and high speed durability.



## Appearance

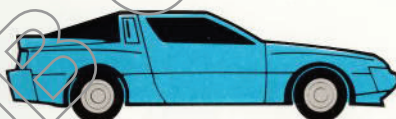
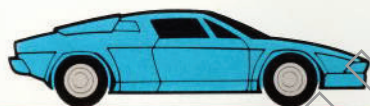
The XP 2000V has been built for performance, not necessarily appearance. Yet each of the elements which deliver performance—the rugged tread blocks, wide flat tread, low aspect ratio—plus the outline black letters—combine to give the XP 2000V the look of power...a look that complements the sleek performance cars for which this tire was designed.

## Typical XP 2000V Applications

205/55 VR16

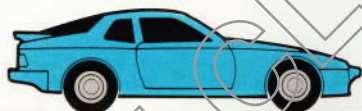
Lamborghini Jalpa

Mitsubishi Starion EST



Porsche 924 (T)

Porsche 944 (T)

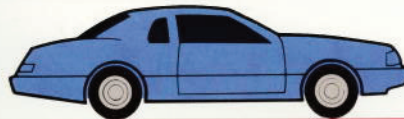


P225/50 VR16

Mustang/Capri SVO

Thunderbird Turbo

Porsche 911 Convertible

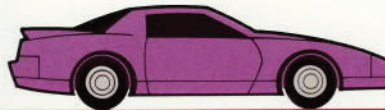
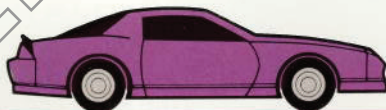


P245/50 VR16

Camaro — IROC

Firebird

Porsche 928S



P255/50 VR16

Corvette

Ferrari-Testarossa

